

Tract Location

ABBEVILLE  
POP 2,987

EARLY COUNTY  
GEORGIA

CLAY

TO F T C

WATER SOURCE  
WELL AND DUNE

BRIDGE ABRAHAM  
MUPAULA

259

258

257

256

255

254

253

252

251

250

249

248

247

246

245

244

243

242

241

209

208

207

206

205

204

203

202

201

200

199

198

197

196

195

194

193

192

191

190

189

188

187

186

185

184

183

182

181

180

179

178

177

119

118

117

116

115

114

113

112

111

110

109

108

107

106

105

104

103

102

101

100

99

98

97

96

95

94

93

92

91

90

89

88

87

59

58

57

56

55

54

53

52

51

50

49

48

47

46

45

44

43

42

41

40

39

38

37

36

35

34

33

32

31

30

29

28

27

19

18

17

16

15

14

13

12

11

10

9

8

7

6

5

4

3

2

1

0

0

0

0

0

0

0

0

0

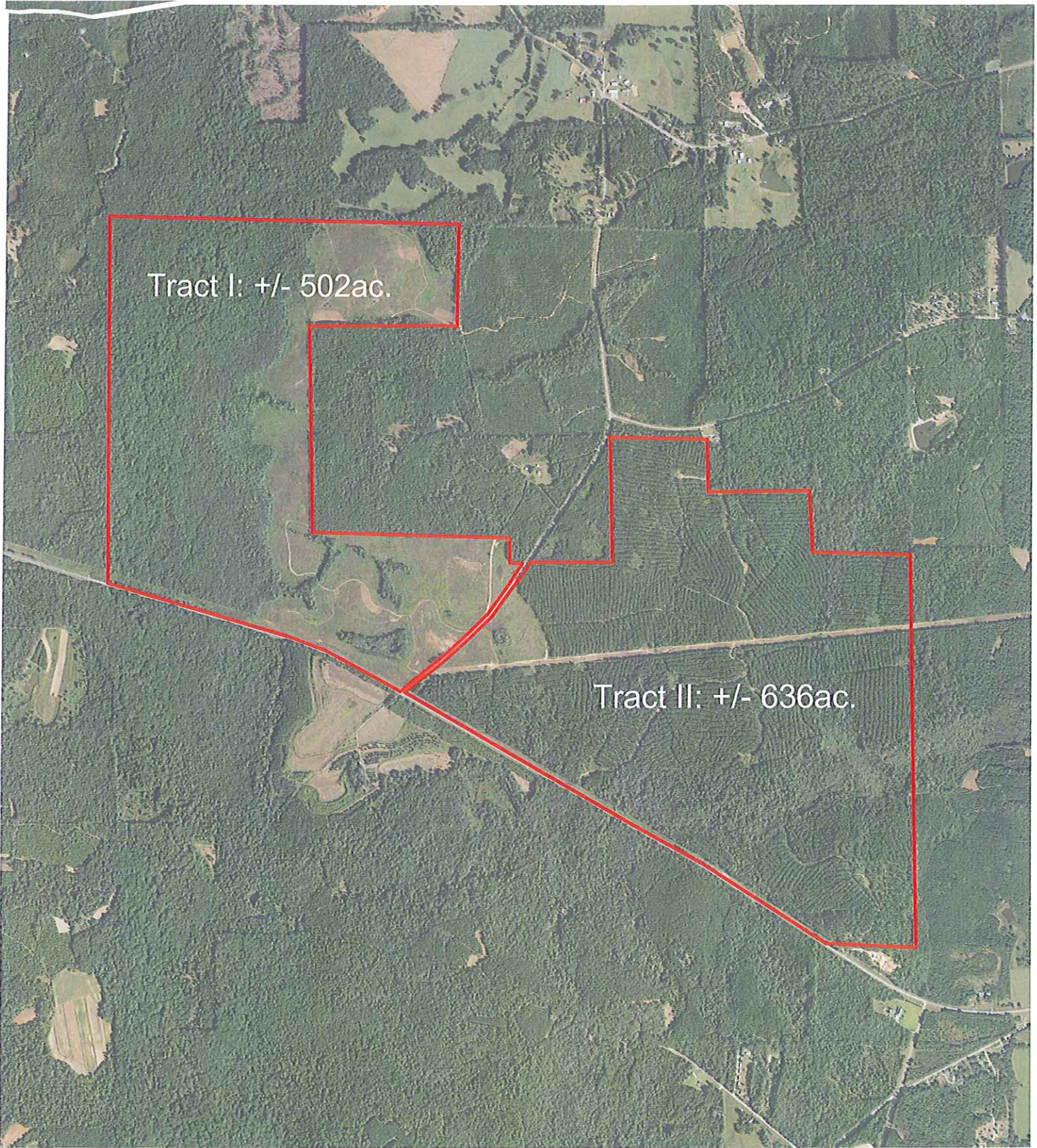
0

0

0

0


0



# Southern Timber Enterprises

700 0 700 1400 Feet

United Forestry Consultants, Inc.  
 640 Hwy 49 North P.O. Box 1596  
 Americus, GA 31709 (229) 928-3453  
 FAX (229) 928-8800  
 E mail: ufors@sowega.net  
 www.unitedforestryconsultants.com

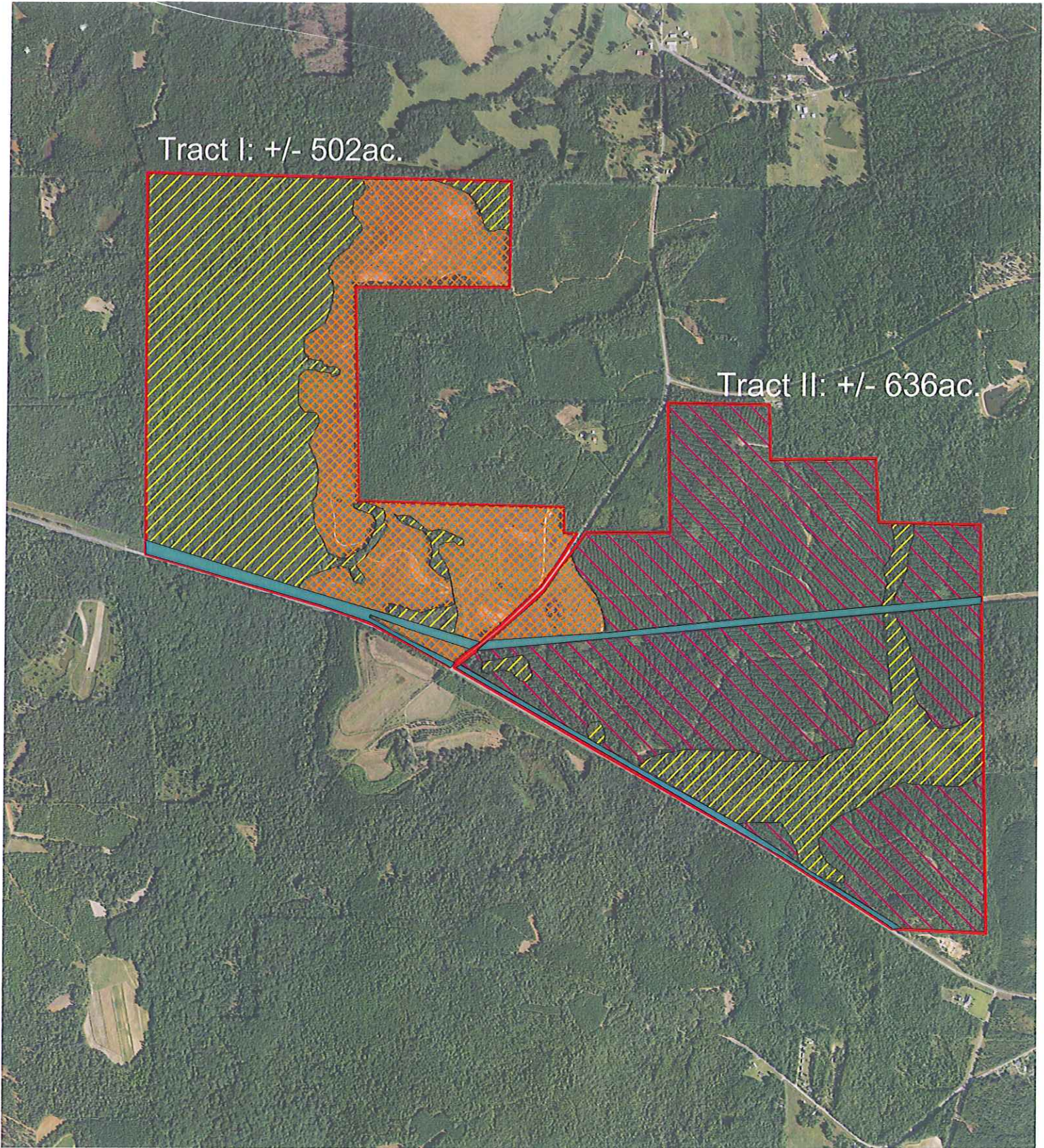


 Property Boundary: +/-1,138ac.



Henry County, Al

"Managing Today for the Needs of Tomorrow"



Tract I: +/- 502ac.

Tract II: +/- 636ac.






# Southern Timber Enterprises

United Forestry Consultants, Inc.

640 Hwy 49 North P.O. Box 1596  
Americus, GA 31709 (229) 928-3453  
FAX (229) 928-8800  
E-mail: ufors@sowega.net  
www.unitedforestryconsultants.com



"Managing Today for the Needs of Tomorrow"

-  Upland Thinned Natural Pine: +/- 488ac.
-  Powerline: +/- 40ac.
-  Premerchantable Planted Slash: +/- 210 ac.
-  Bottomland Hardwoods: +/- 400ac.
-  Property Boundary: +/-1,138ac.



Henry County, Al