



GREENE FOREST & FARM REALTY, LLC

Specializing in TIMBER & FARMLAND REAL ESTATE

640 Hwy. 49 North / P.O. Box 1596 / Americus, GA 31709

229-924-9048 / Fax: 229-928-8800

MOORE TRACT

HUNTING & INVESTMENT PROPERTY – RANDOLPH CO.,
GEORGIA

GENERAL INFORMATION

The subject property totals 450.223 acres by deed and would make an excellent investment and recreational tract.

LAND TYPES AND AMENITIES

The subject property consists of several age classes of pre merch planted pine as well as a stand ready for a first thin. There are over 100 acres of hardwoods on the property. Deer and turkey are abundant on property as well. Included in the package are detailed maps showing the property.

TRACT LOCATION

The property is in Randolph County, Georgia. It is located on Lunsford Rd. near State Route 520 and Parrott, GA. Included is a detailed road map showing property location.

SALE PRICE INFORMATION

The property is listed at \$2,500.00 per acre.

Contact Information:

Greene Forest & Farm Realty, LLC @ 229-924-9048 or contact us by cell at the numbers listed in the left hand column.

Information on the property may be found at:

www.greeneforestandfarm.com

A sister Company of United Forestry Consultants, Inc.

Jeff Greene
Broker
229-938-8103

Mack Greene
Salesperson
229-942-1515

Mason Greene
Salesperson
229-942-1698


Ken Coptsias
Salesperson
229-815-0519


View Current
Listings at
www.greeneforestandfarm.com

"Let Our Experience Work For You"




Moore Tract

 **United Forestry Consultants, Inc.**
640 Hwy 49 North P.O. Box 1596
Americus, GA 31709 (229) 928-3453
FAX (229) 928-8800
E mail: ufors@sowega.net
www.unitedforestryconsultants.com
"Managing Today for the Needs of Tomorrow"

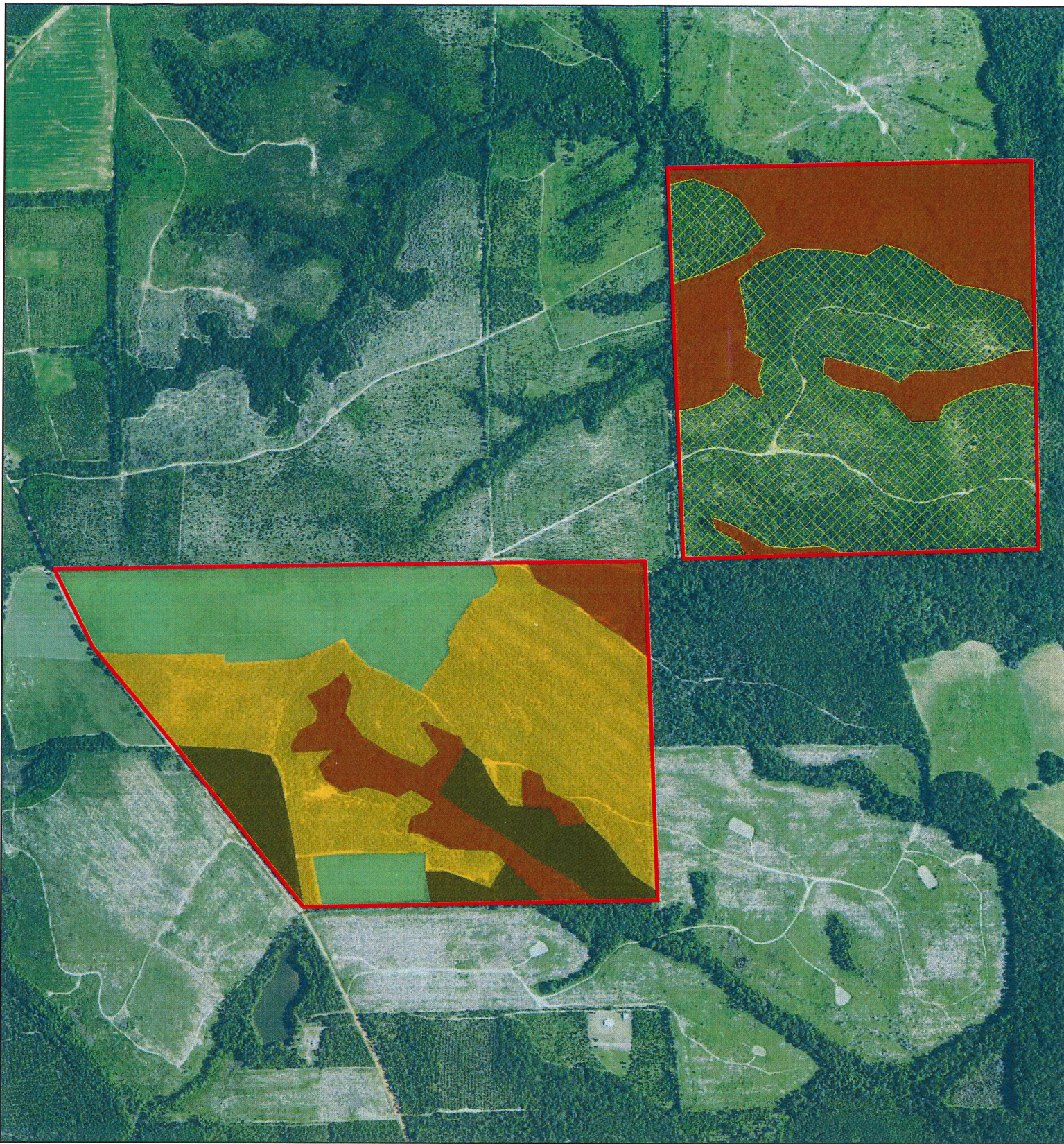


Legend


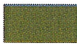




 Property Boundary +/- 445 ac.



Randolph County, GA



Legend


-  Property Boundary +/- 445 ac.
-  Loblolly PP +/- 30 ac.
-  Pre-Merch Stand 3 +/- 115 ac.
-  Pre-Merch Stand 2 +/- 62 ac.
-  Pre-Merch Stand 1 +/- 134 ac.
-  Hardwoods +/- 104 ac.

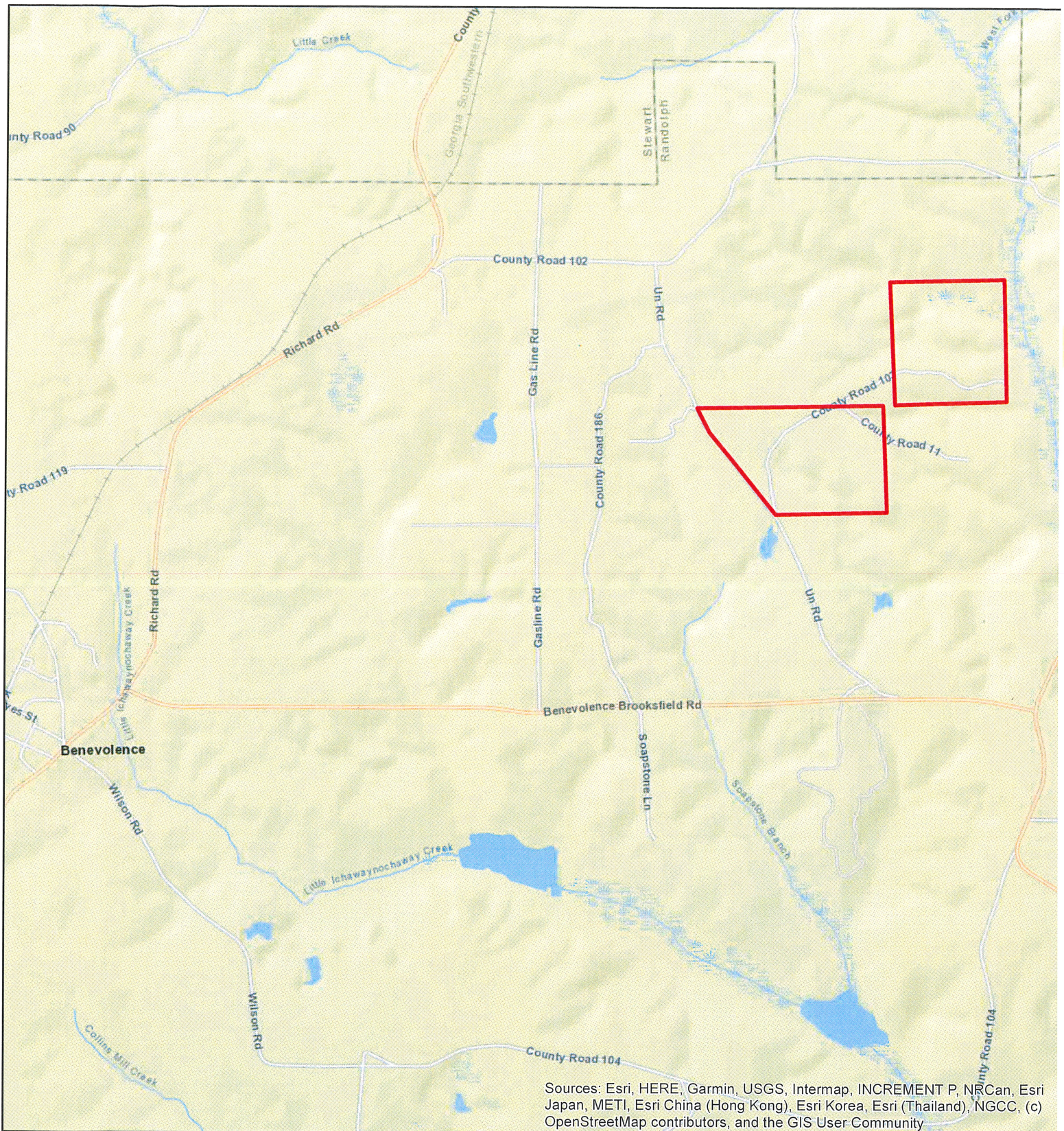


Randolph County, GA

Moore Tract

United Forestry Consultants, Inc.
 640 Hwy 49 North P.O. Box 1596
 Americus, GA 31709 (229) 928-3453
 FAX (229) 928-8800
 E mail: ufors@sowega.net
 www.unitedforestryconsultants.com
 "Managing Today for the Needs of Tomorrow"





Sources: Esri, HERE, Garmin, USGS, Intermap, INCREMENT P, NRCan, Esri Japan, METI, Esri China (Hong Kong), Esri Korea, Esri (Thailand), NGCC, (c) OpenStreetMap contributors, and the GIS User Community

Moore Tract



United Forestry Consultants, Inc.

640 Hwy 49 North P.O. Box 1596
Americus, GA 31709 (229) 928-3453

FAX (229) 928-8800


E mail: ufors@sowega.net

www.unitedforestryconsultants.com

"Managing Today for the Needs of Tomorrow"



Legend

 Property Boundary +/- 445 ac.



Randolph County, GA