




Fowle & Shell Tract

**United Forestry Consultants, Inc.**
640 Hwy 49 North P.O. Box 1596
Americus, GA 31709 (229) 928-3453
FAX (229) 928-8800
E mail: ufors@sowega.net
www.unitedforestryconsultants.com
"Managing Today for the Needs of Tomorrow"

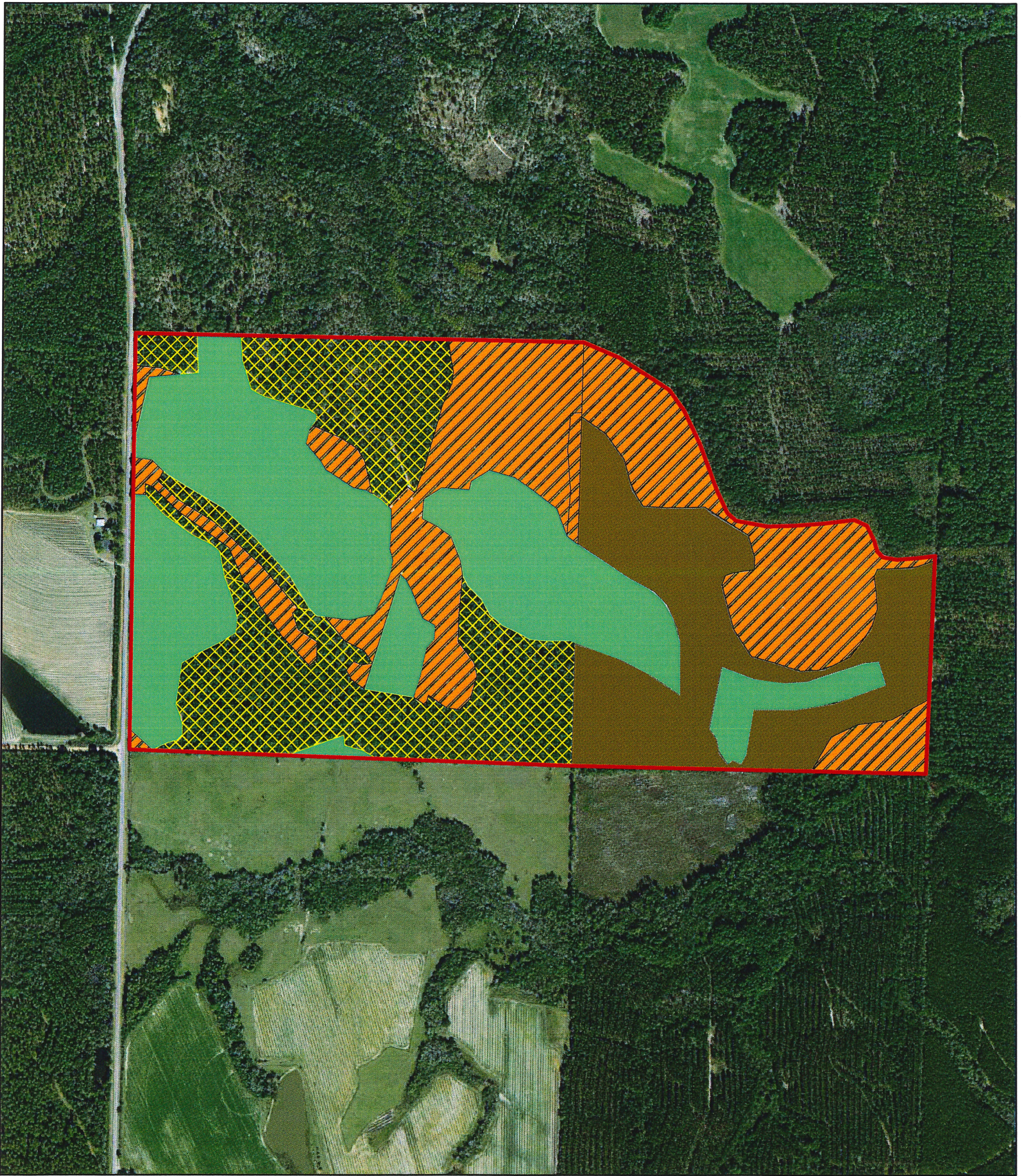


Legend


 Property Boundary +/- 335 ac.






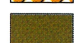

Wilcox County, GA



Fowle & Shell Tract

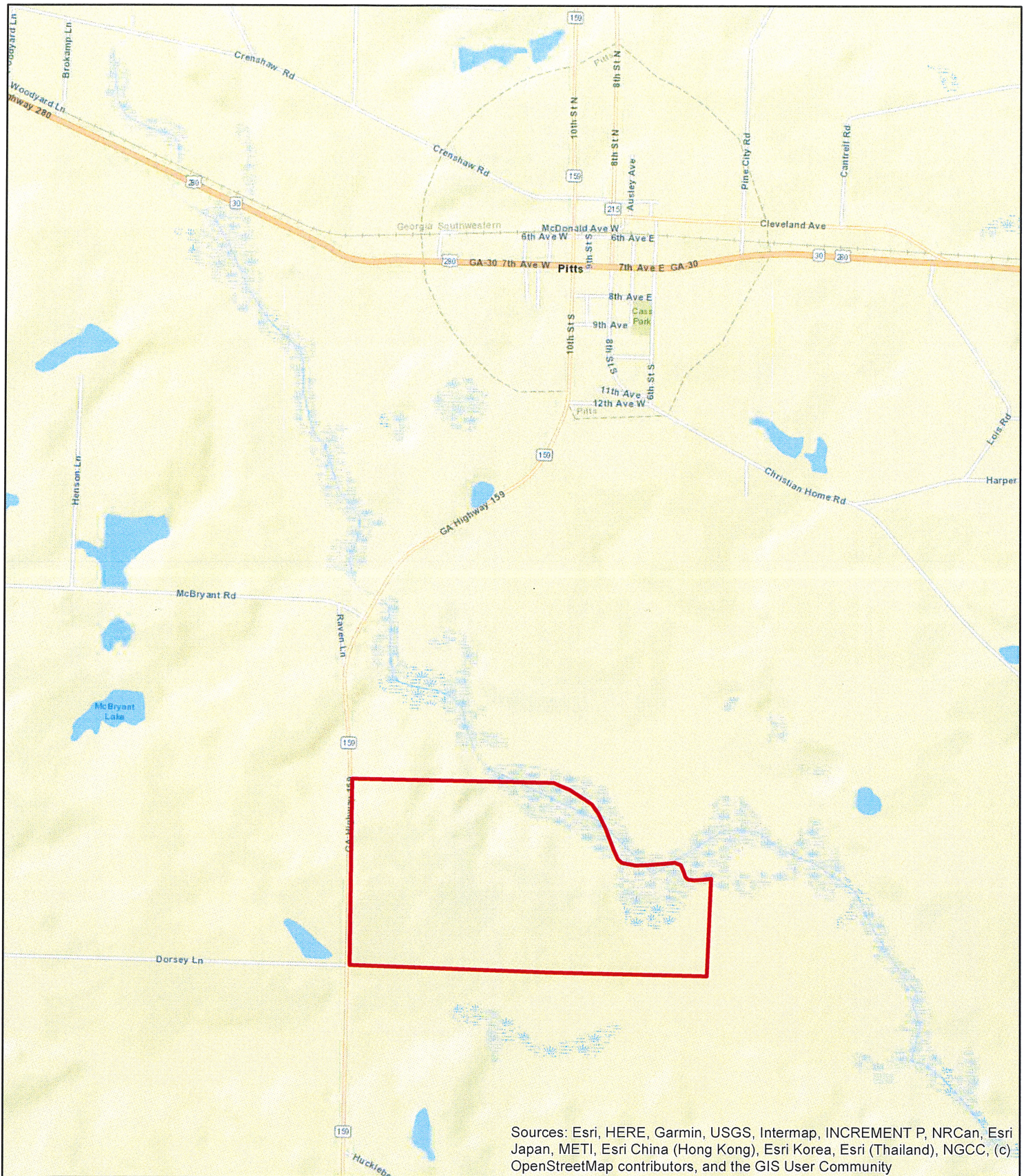

United Forestry Consultants, Inc.
 640 Hwy 49 North P.O. Box 1596
 Americus, GA 31709 (229) 928-3453
 FAX (229) 928-8800
 E mail: ufors@sowega.net
 www.unitedforestryconsultants.com
 "Managing Today for the Needs of Tomorrow"

Legend

-  Property Boundary +/- 335 ac.
-  Open Fields +/- 103 ac.
-  Natural Pine/Hardwood +/- 92 ac.
-  Slash PP 2 +/- 58 ac.
-  Slash PP 1 +/- 82 ac.




Wilcox County, GA

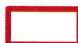


Fowle & Shell Tract

United Forestry Consultants, Inc.
 640 Hwy 49 North P.O. Box 1596
 Americus, GA 31709 (229) 928-3453
 FAX (229) 928-8800
 E mail: ufors@sowega.net
 www.unitedforestryconsultants.com
 "Managing Today for the Needs of Tomorrow"



Legend

 Property Boundary +/- 335 ac.



Wilcox County, GA