



# GREENE FOREST & FARM REALTY, LLC

Specializing in TIMBER & FARMLAND REAL ESTATE

640 Hwy. 49 North / P.O. Box 1596 / Americus, GA 31709

229-924-9048 / Fax: 229-928-8800

## MTP Properties Tract

### HUNTING & INVESTMENT PROPERTY – SUMTER CO., GEORGIA

#### GENERAL INFORMATION

The subject property totals 233.73 by survey. This property is an excellent recreational tract with lots of deer and turkey. Also would make an excellent home site for someone wanting to live in the country.

#### LAND TYPES AND AMENITIES

The subject property consists of dryland fields totaling 58 acres as well as Planted Pine totaling 26.5 acres. Also there is a nice 7 acre pond with the remaining 141 acres consisting of natural pine and hardwoods. Included is a detailed map showing outline of the property.

#### TRACT LOCATION

The property is located in Sumter County, Georgia. Located at the intersection of Hwy 195 and Clements Rd. Included is a detailed map showing property location.

#### SALE PRICE INFORMATION

The property is listed at \$2,450.00 per acre.

#### Contact Information:

Greene Forest & Farm Realty, LLC @ 229-924-9048 or contact us by cell at the numbers listed in the left hand column.

Information on the property may be found at:

[www.greeneforestandfarm.com](http://www.greeneforestandfarm.com)

A sister Company of United Forestry Consultants, Inc.

Jeff Greene  
Broker  
229-938-8103

Mack Greene  
Salesperson  
229-942-1515

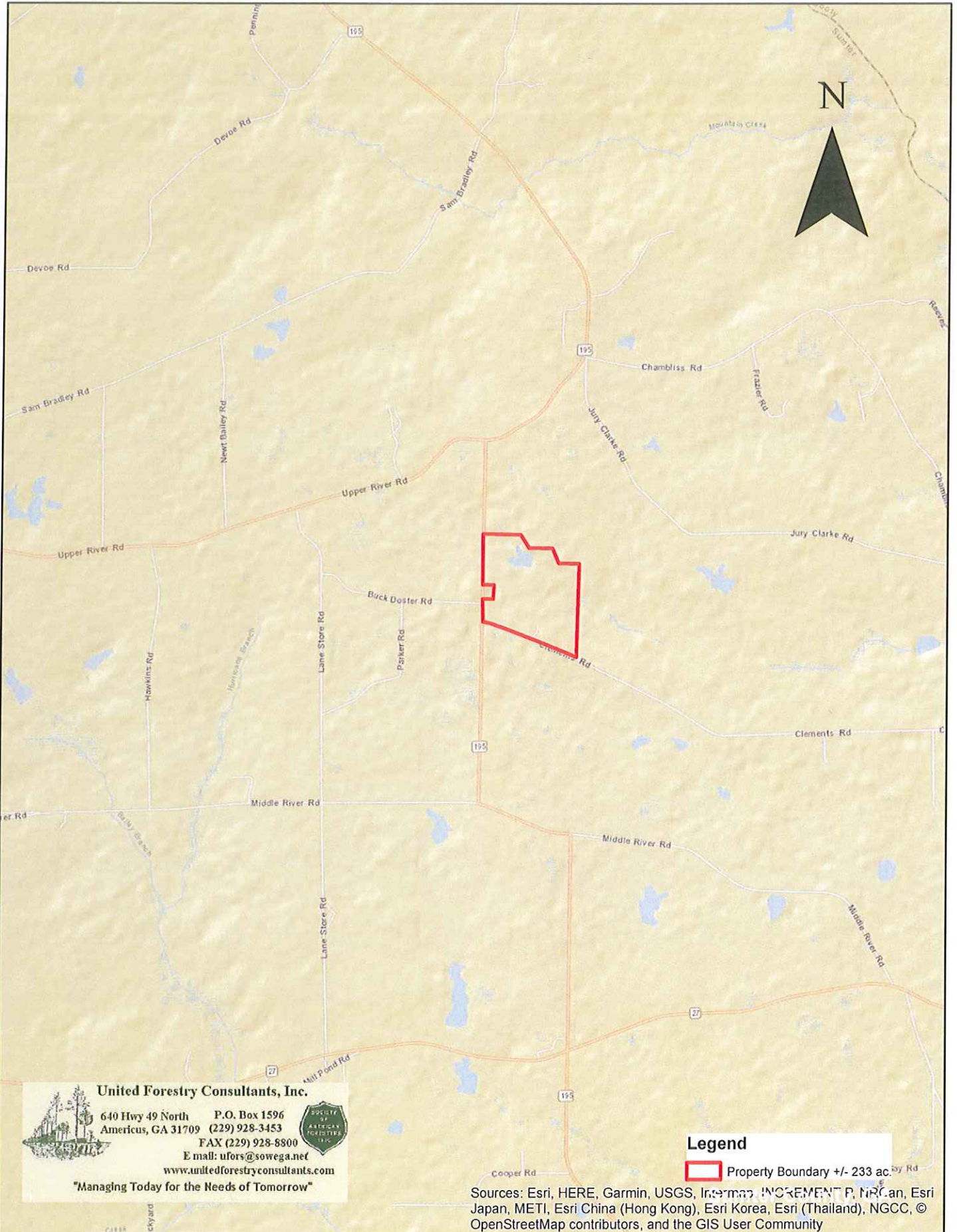
Mason Greene  
Salesperson  
229-942-1698

Ken Coptsias  
Salesperson  
229-815-0519

View Current  
Listings at  
[www.greeneforestandfarm.com](http://www.greeneforestandfarm.com)

*"Let Our Experience Work For You"*

# MPT Properties



**United Forestry Consultants, Inc.**  
 640 Hwy 49 North P.O. Box 1596  
 Americus, GA 31709 (229) 928-3453  
 FAX (229) 928-8800  
 E mail: ufors@sowega.net  
 www.unitedforestryconsultants.com  
 "Managing Today for the Needs of Tomorrow"

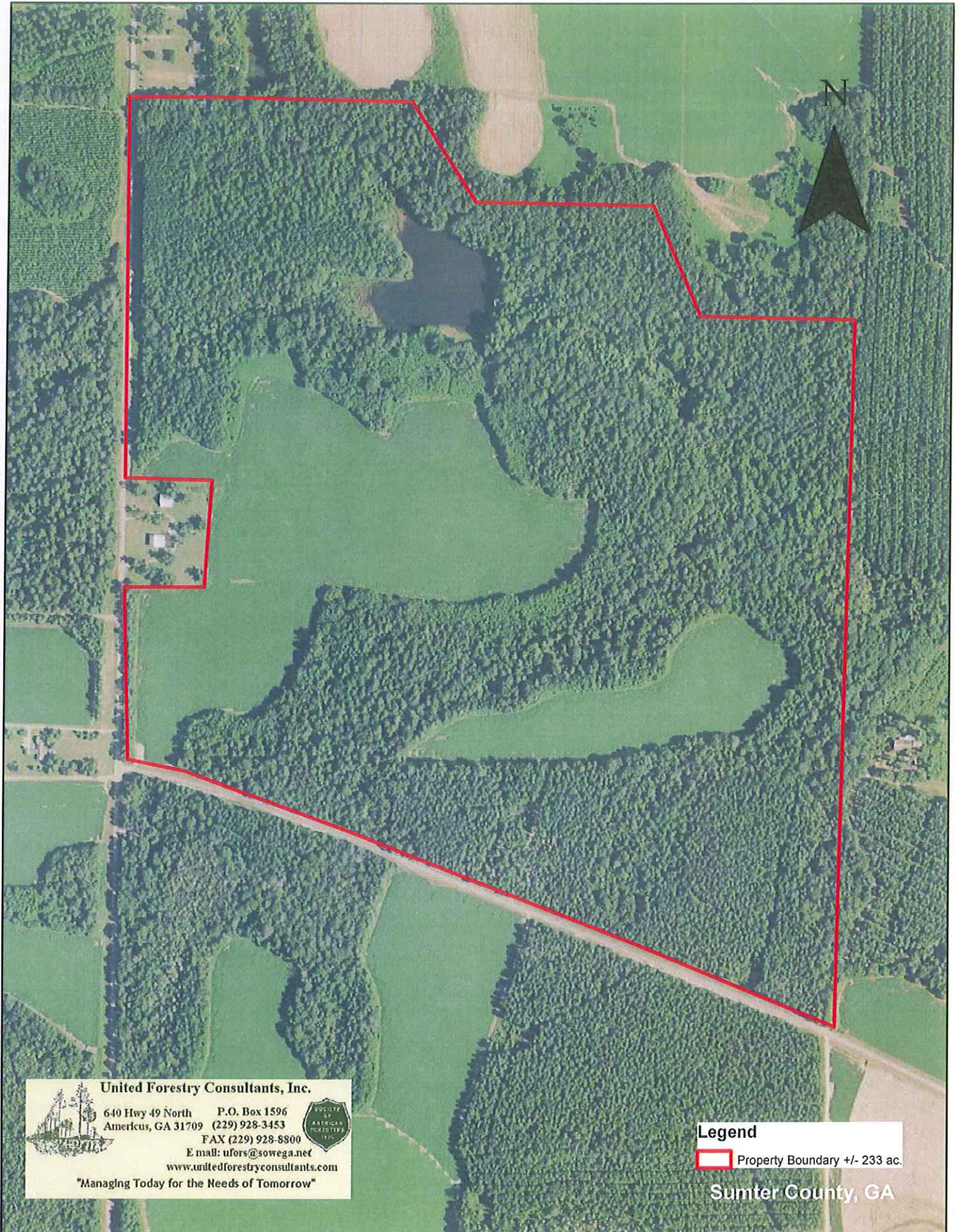


**Legend**  
 Property Boundary +/- 233 ac.

Sources: Esri, HERE, Garmin, USGS, Intel, © Mapbox, © OpenStreetMap contributors, and the GIS User Community



# MPT Properties

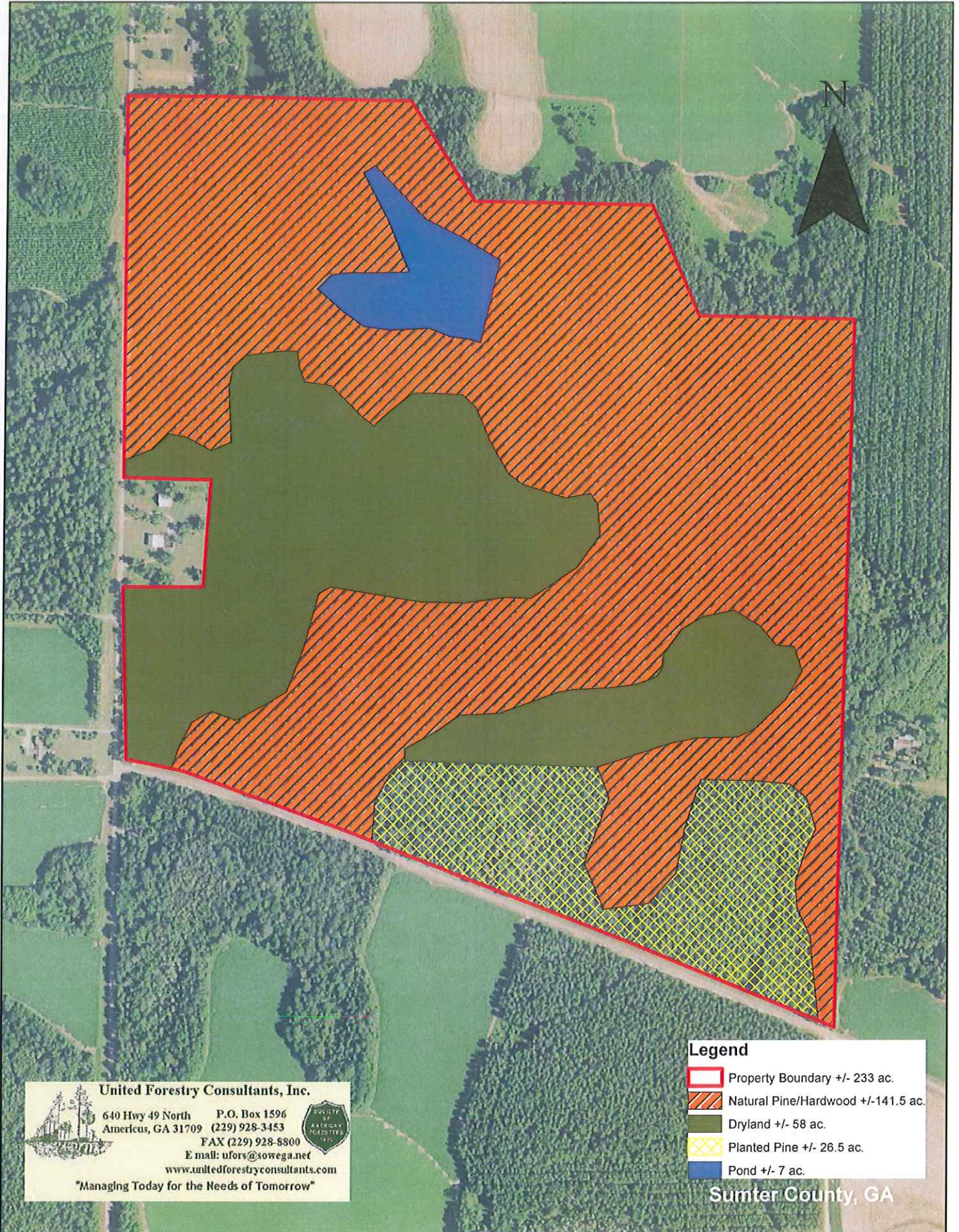


**United Forestry Consultants, Inc.**  
640 Hwy 49 North P.O. Box 1596  
Americus, GA 31709 (229) 928-3453  
FAX (229) 928-8800  
E mail: ufors@sowega.net  
www.unitedforestryconsultants.com  
"Managing Today for the Needs of Tomorrow"



**Legend**  
Property Boundary +/- 233 ac.  
Sumter County, GA



# MPT Properties



**United Forestry Consultants, Inc.**  
640 Hwy 49 North P.O. Box 1596  
Americus, GA 31709 (229) 928-3453  
FAX (229) 928-8800  
E mail: ufors@sowega.net  
www.unitedforestryconsultants.com  
"Managing Today for the Needs of Tomorrow"

Legend	
	Property Boundary +/- 233 ac.
	Natural Pine/Hardwood +/-141.5 ac.
	Dryland +/- 58 ac.
	Planted Pine +/- 26.5 ac.
	Pond +/- 7 ac.

Sumter County, GA