



GREENE FOREST & FARM REALTY, LLC

Specializing in TIMBER & FARMLAND REAL ESTATE

640 Hwy. 49 North / P.O. Box 1596 / Americus, GA 31709
229-924-9048 / Fax: 229-928-8800

Russel Tract

**HUNTING & INVESTMENT PROPERTY – MERIWETHER CO.,
GEORGIA**

GENERAL INFORMATION

The subject property totals 100 acres more or less. The property consists of pines thinned down to a plantation cut. The property has paved road frontage and would make an excellent home site or recreational tract.

LAND TYPES AND AMENITIES

The property has paved road frontage on two sides. Hunting opportunities include deer and turkey. Included in the package is a map showing the property.

TRACT LOCATION

The property is located in Meriwether County, Georgia. It is located on Hwy 74 just north of Woodbury, GA. Included is a detailed road map showing property location.

SALE PRICE INFORMATION

The property is listed at \$2,200.00 per acre.

Contact Information:

Greene Forest & Farm Realty, LLC @ 229-924-9048 or contact us by cell at the numbers listed in the left hand column.

Information on the property may be found at:

www.greeneforestandfarm.com

A sister Company of United Forestry Consultants, Inc.

Jeff Greene
Broker
229-938-8103

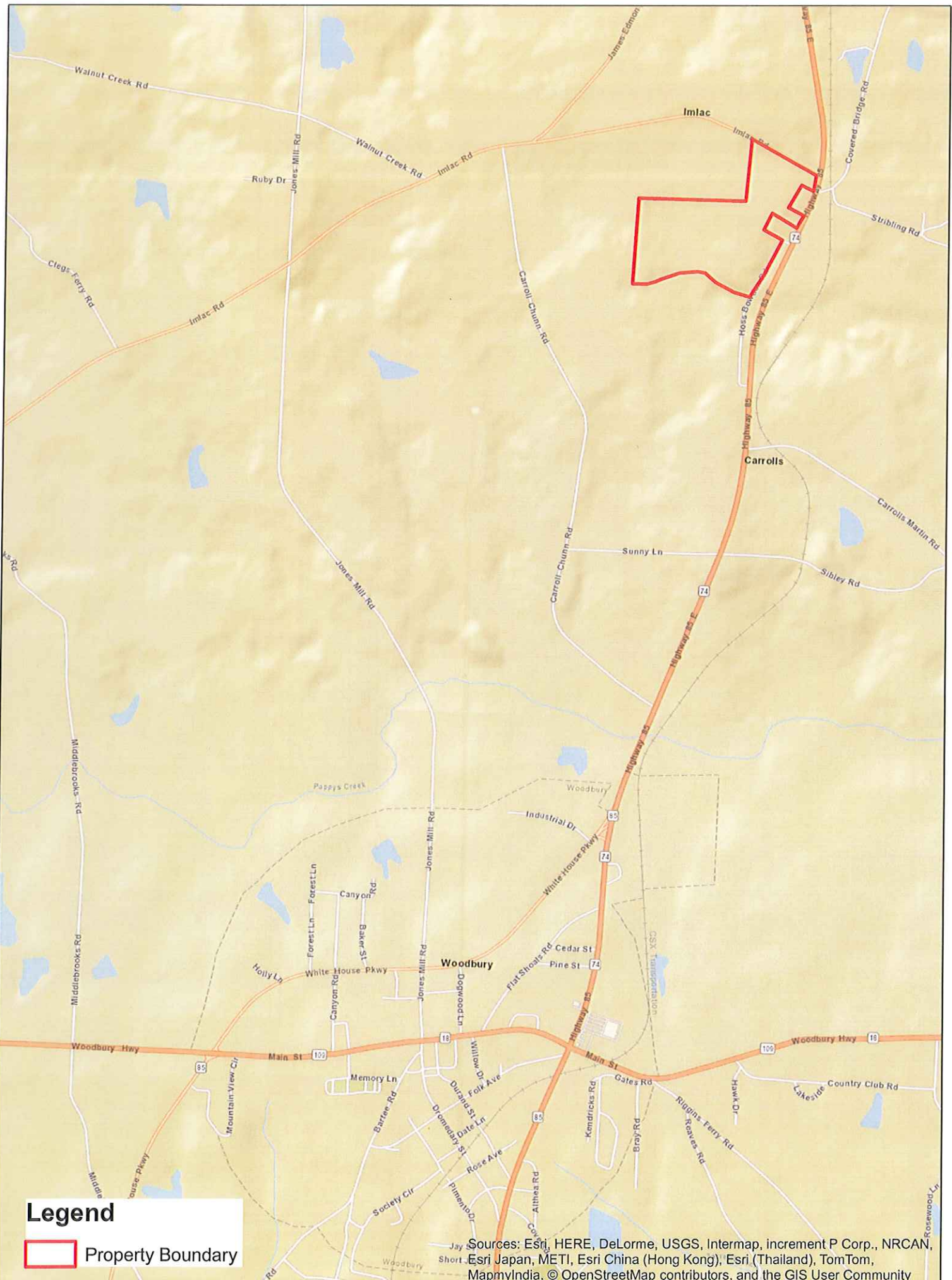
Mack Greene
Salesperson
229-942-1515

Mason Greene
Salesperson
229-942-1698

Ken Coptias
Salesperson
229-815-0519

View Current
Listings at
www.greeneforestandfarm.com

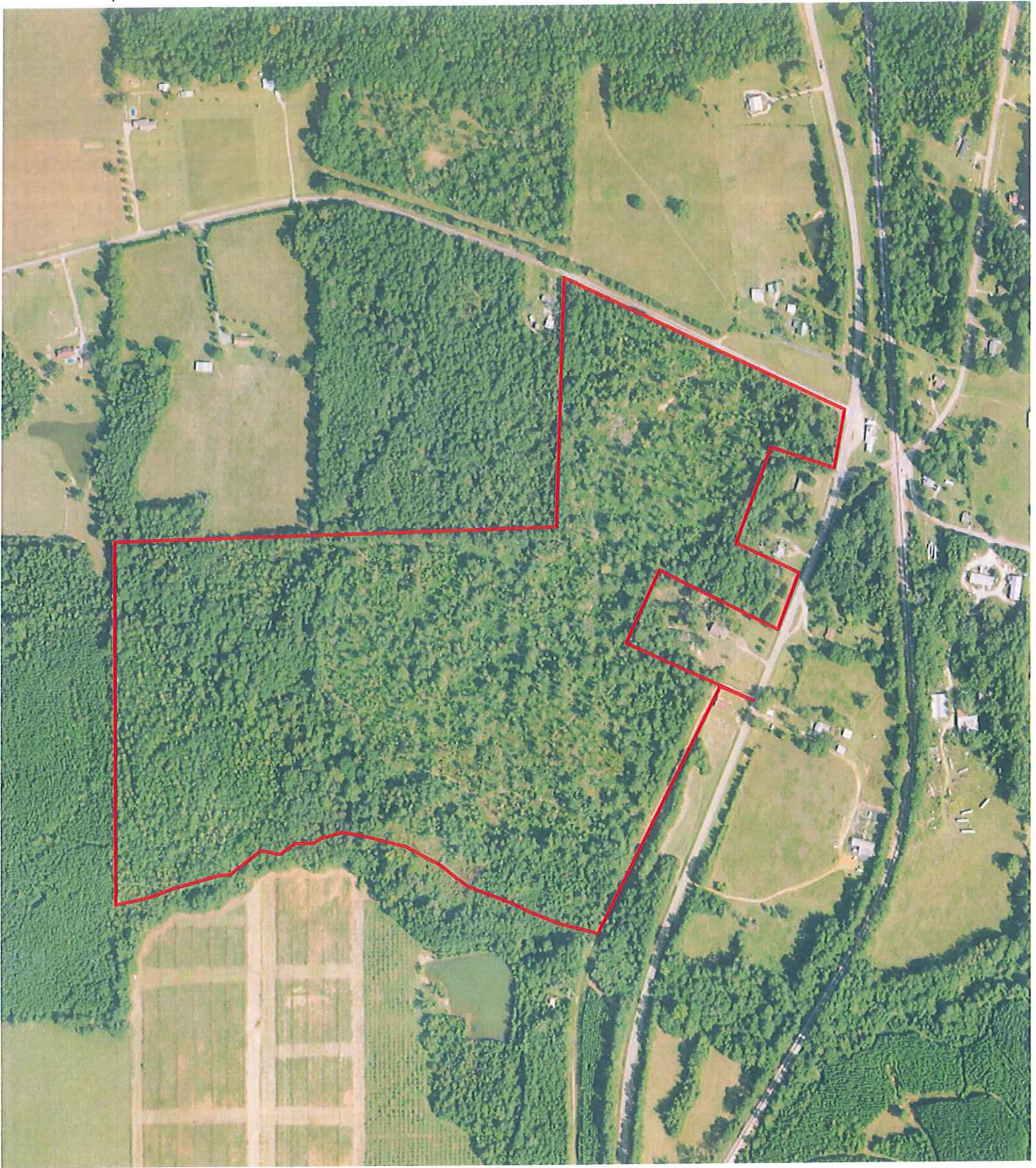
"Let Our Experience Work For You"



Legend

 Property Boundary

Sources: Esri, HERE, DeLorme, USGS, Intermap, increment P Corp., NRCAN, Esri Japan, METI, Esri China (Hong Kong), Esri (Thailand), TomTom, MapmyIndia, © OpenStreetMap contributors, and the GIS User Community




7000 0 7000 14000 Feet

Russell Tract

 Property Boundary: +/- 100ac.



Meriwether County


United Forestry Consultants, Inc.
 640 Hwy 49 North P.O. Box 1596
 Americus, GA 31709 (229) 928-3453
 FAX (229) 928-8800
 E mail: ufors@sowega.net
 www.unitedforestryconsultants.com
 "Managing Today for the Needs of Tomorrow"